

# Digital Earth Sweden and the Swedish Space Data Lab



Digital Earth  
SWEDEN



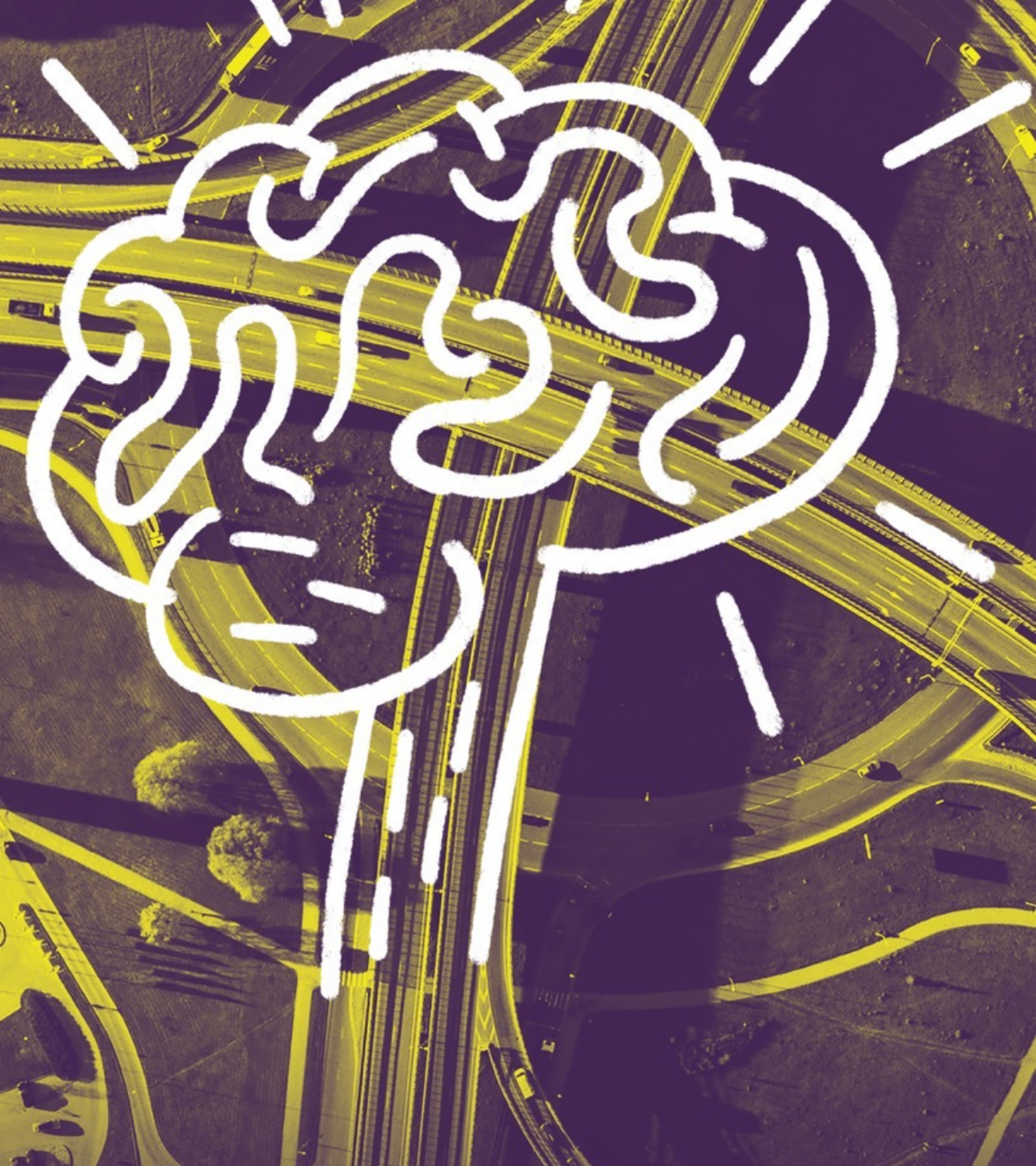
SWEDISH  
SPACE  
DATA LAB



**RI.  
SE**

# **New solutions for a sustainable future**

**Competitiveness and sustainable transition based on science**



# Sweden's research institute

- We are a state-owned company with nearly 3,300 employees who contribute to transforming knowledge from research into new products and services.
- Our mission is to work with our customers and partners to develop competitive solutions that drive sustainable development forward.
- With our unique breadth and collective expertise, we can take a systemic perspective on complex sustainability issues.
- In our more than 130 test beds, products and processes of the future can be tested and scaled up.

# SUSTAINABLE DEVELOPMENT GOALS



# Data collection -Esa and Nasa

> 20 petabyte

70 terabyte

1972

1985

2000

2015

2023-11-23

© ESA

RI  
SE

FULL, FREE AND OPEN  
ACCESS TO DATA



 Copernicus  
Europe's eyes on Earth

The Copernicus logo features a stylized blue 'C' that curves around the word 'Copernicus'. The letter 'o' in 'Copernicus' is replaced by a yellow sun-like symbol. Below the main name, the tagline 'Europe's eyes on Earth' is written in a smaller, white, sans-serif font.

# In Cooperation with governmental Agencies

Myndighetssamverkan Copernicus:





AI  
SWEDEN

RI.  
SE



SWEDISH  
SPACE  
DATA LAB



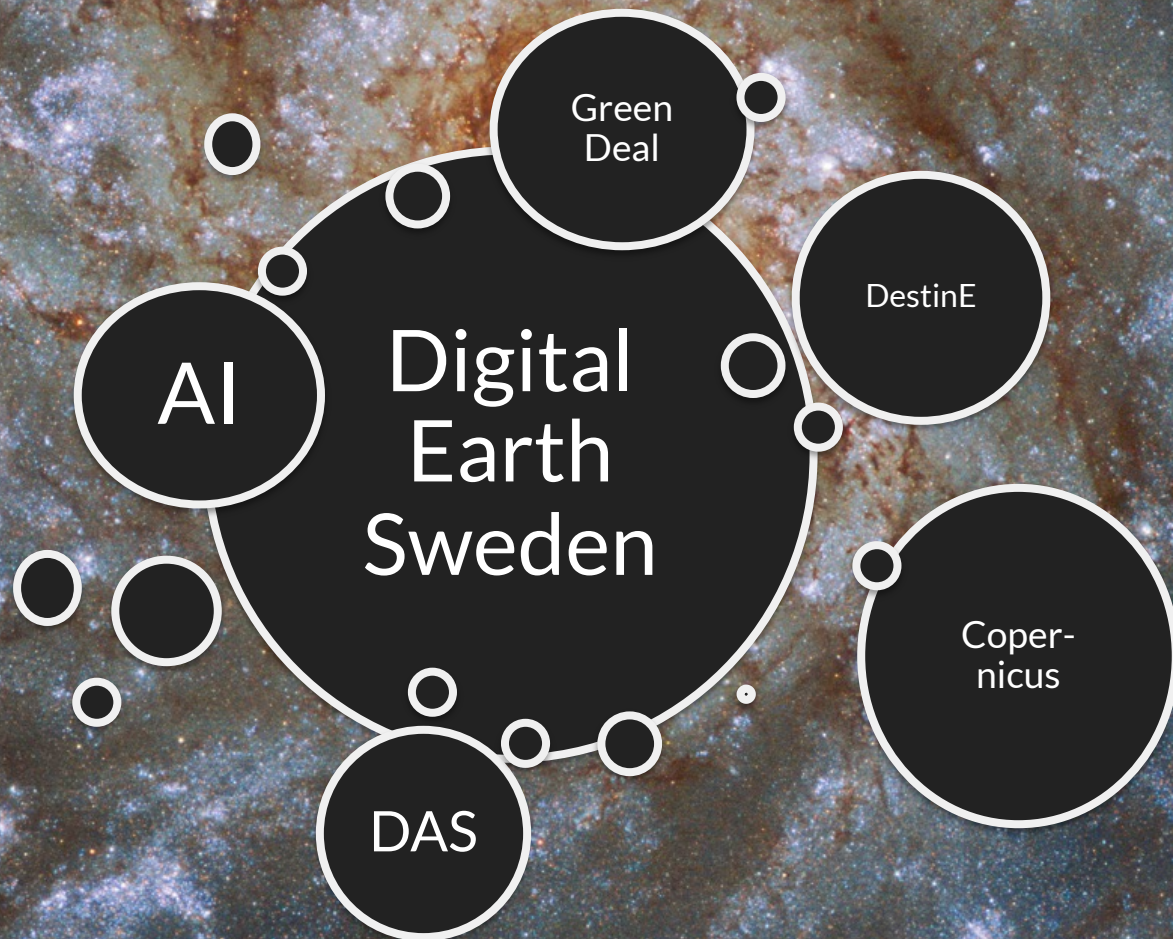
Rymdstyrelsen  
Swedish National Space Agency

VINNOVA  
Sweden's Innovation Agency

SMHI



# Digital Earth Sweden

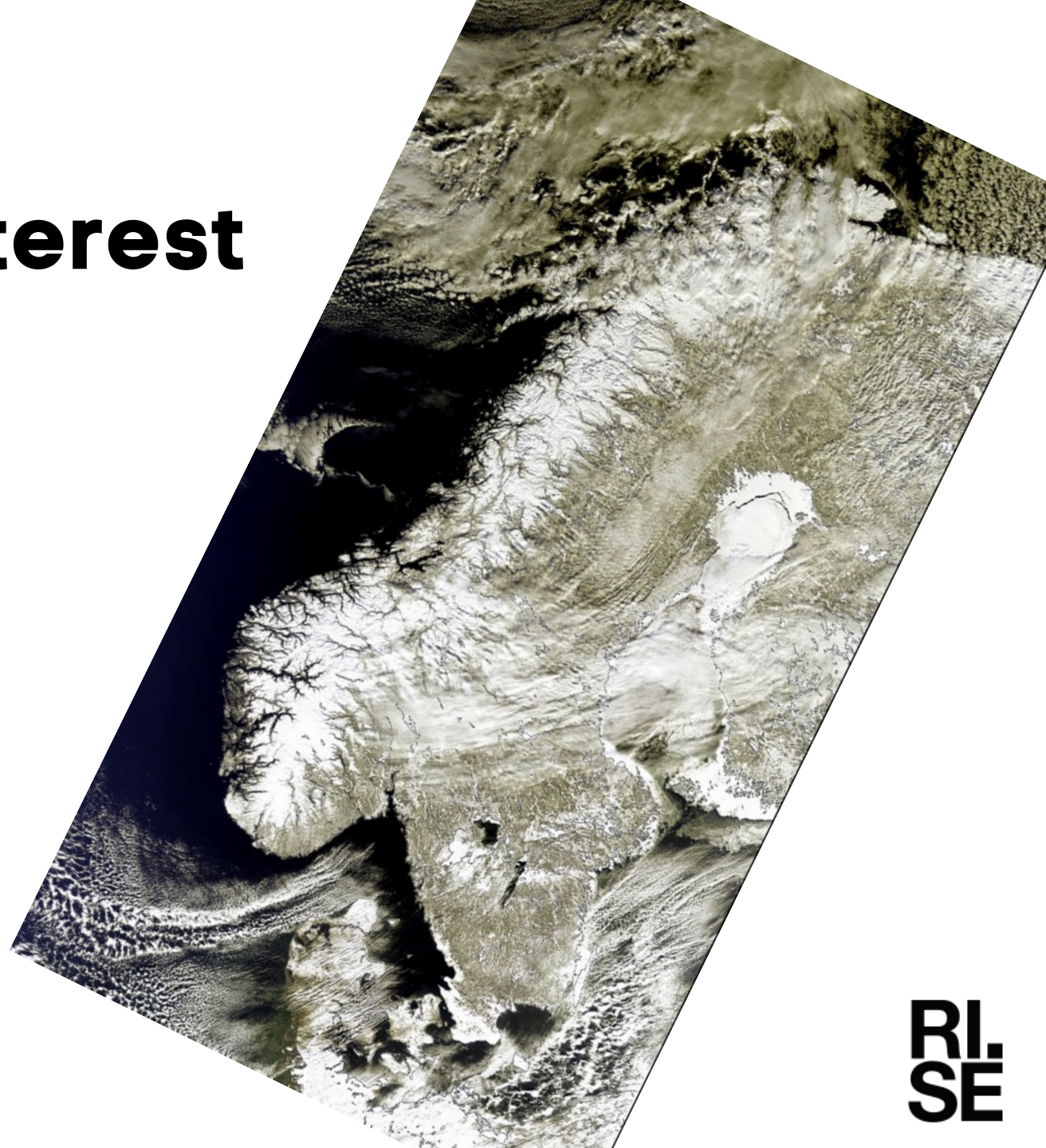


2023-11-23

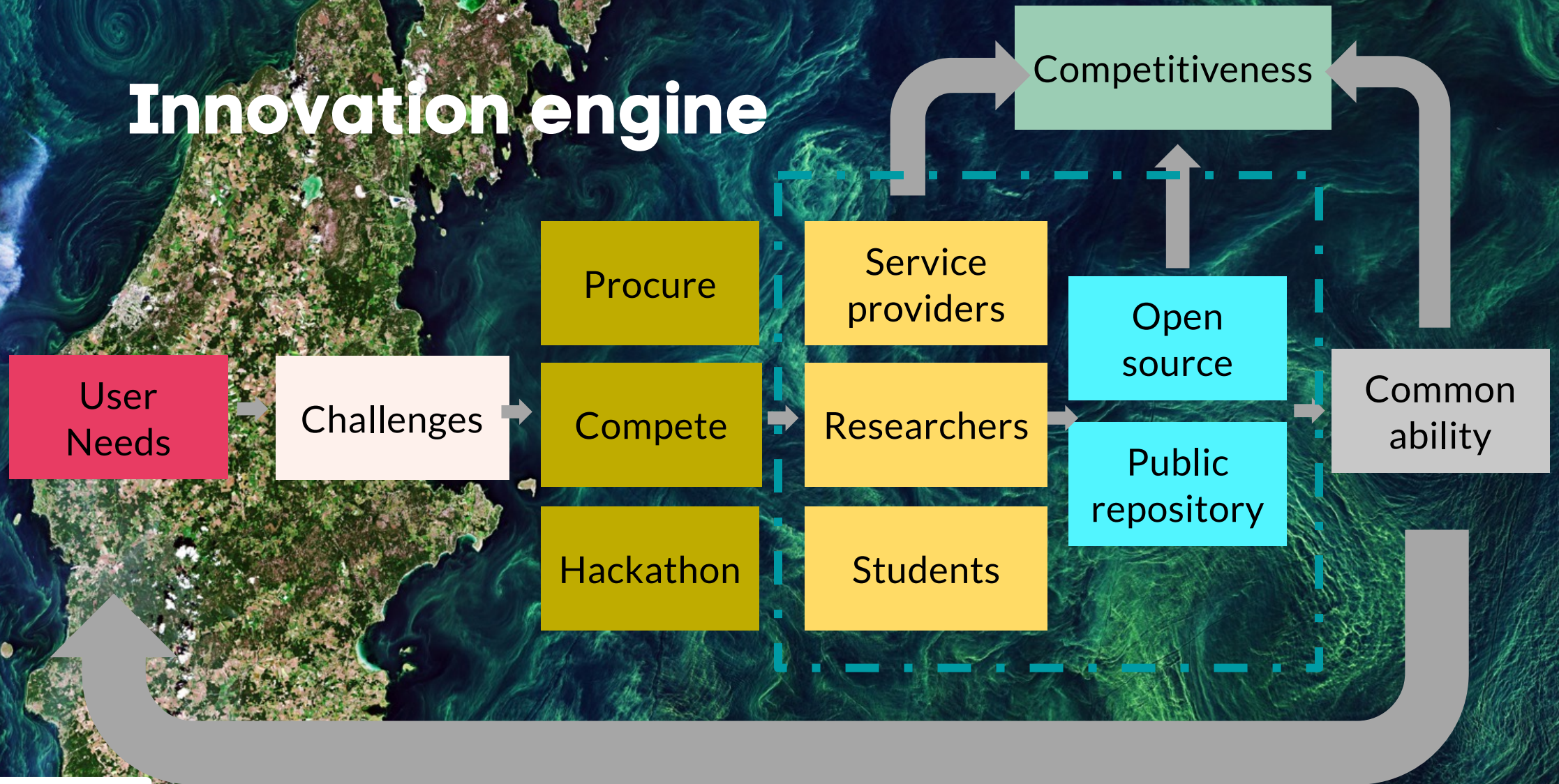
© ESA

RI  
SE

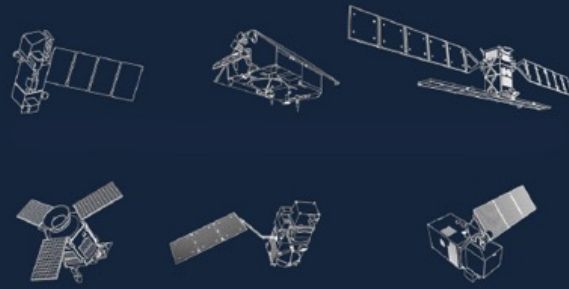
# Main Area of Interest



# Innovation engine



Sentinel-  
satellites

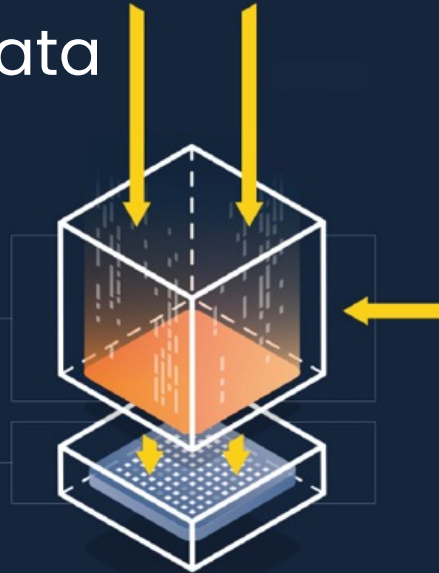


Space data

Data cube

Data is sorted, indexed  
and optimized

Compute interface



Climate data  
Geodata  
Business data  
Financial data  
Trends  
Production



Analyses ready data and results

# HPC support for innovation:

- Training of EO models
- Space platform development
- Space debris and constellation tracking and simulation



**Thanks**