

RI.
SE

TEF - TEST EXPERIMENTAL FACILITIES

CitCom.ai

AI TEF for smart and sustainable cities and societies in Digital Europe program





Project Coordinator
Petra Dalunde
(WP1, WP2, WP4, WP5)



Chief Technology Officer
Anders Gavler
(WP1, WP3, WP5)



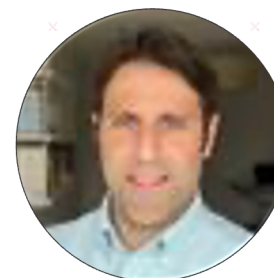
Smart City Strategist
Claus Popp Larsen
(WP1, WP2, WP4)



Senior Researcher
Mikhail Popov
(WP3, WP4)



Legal expert
Susanne Stenberg
(WP4)



Research Leader AI
Rami Mochaourab
(WP4)



Legal expert
Håkan Burden
(WP4)



Project Manager, Cyber Security
Niclas Eriksson
(WP3)
RISE – Research Institutes of Sweden AB



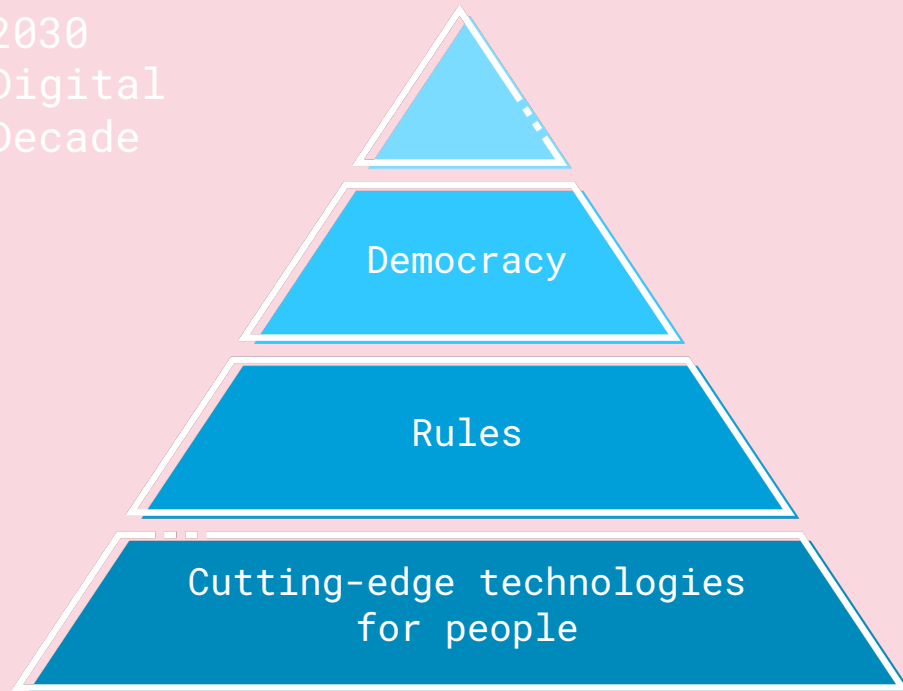
Project Manager, Test Facility Lead
Alex Jonsson
(WP4)



Project Manager, Cyber Security
Iraklis Symeonidis
(WP3)

**“IT HAPPENS
NOW”**

2030
Digital
Decade

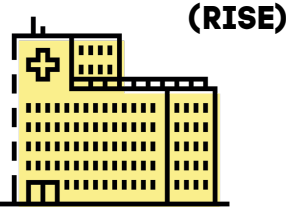


#DigitalEU

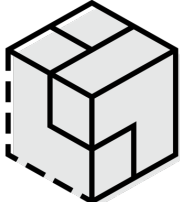
What is happening?

- High ambition in EUs 2030 Digital Decade (70 B Euro)
- Decided and coming legislation with standards
- Digital Europe Programme stimulates and point out direction
- RISE is on track!

4 launched TEF:s



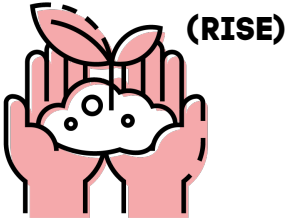
Health



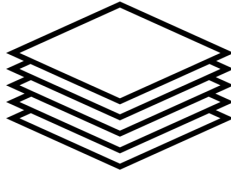
Manufacturing



Smart and sustainable cities and societies

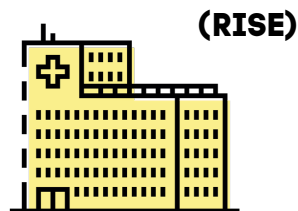


AgriFood

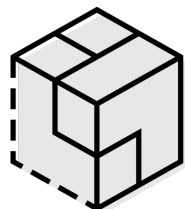


(+5)

4 launched TEFs



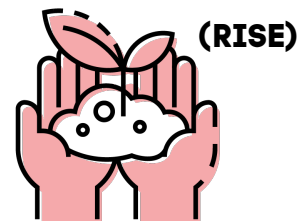
Health



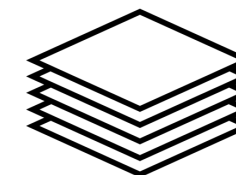
Manufacturing



Smart and sustainable
cities and societies



AgriFood



(+5)



Read more
TEF Energy
(Horizon)

More is coming!

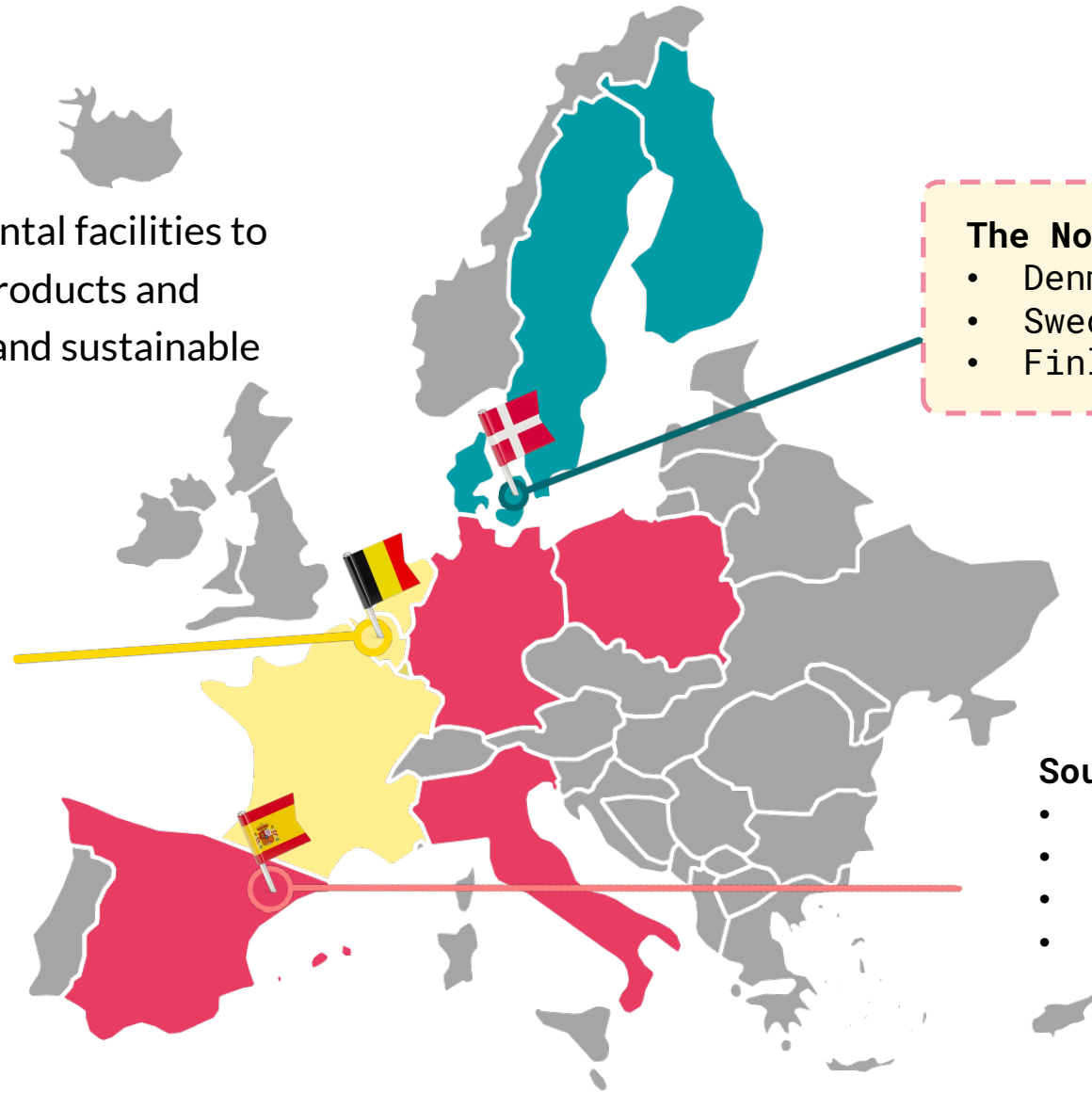
- Energy (Horizon), opened 12th September
- Public Administration

CitCom.ai

Access test beds and experimental facilities to SMEs developing datadriven products and services/AI systems for smart and sustainable cities and societies.

Central Europe – Move

- Belgium – Coordinator
- The Netherlands
- France
- Luxemburg



The Nordics – Power

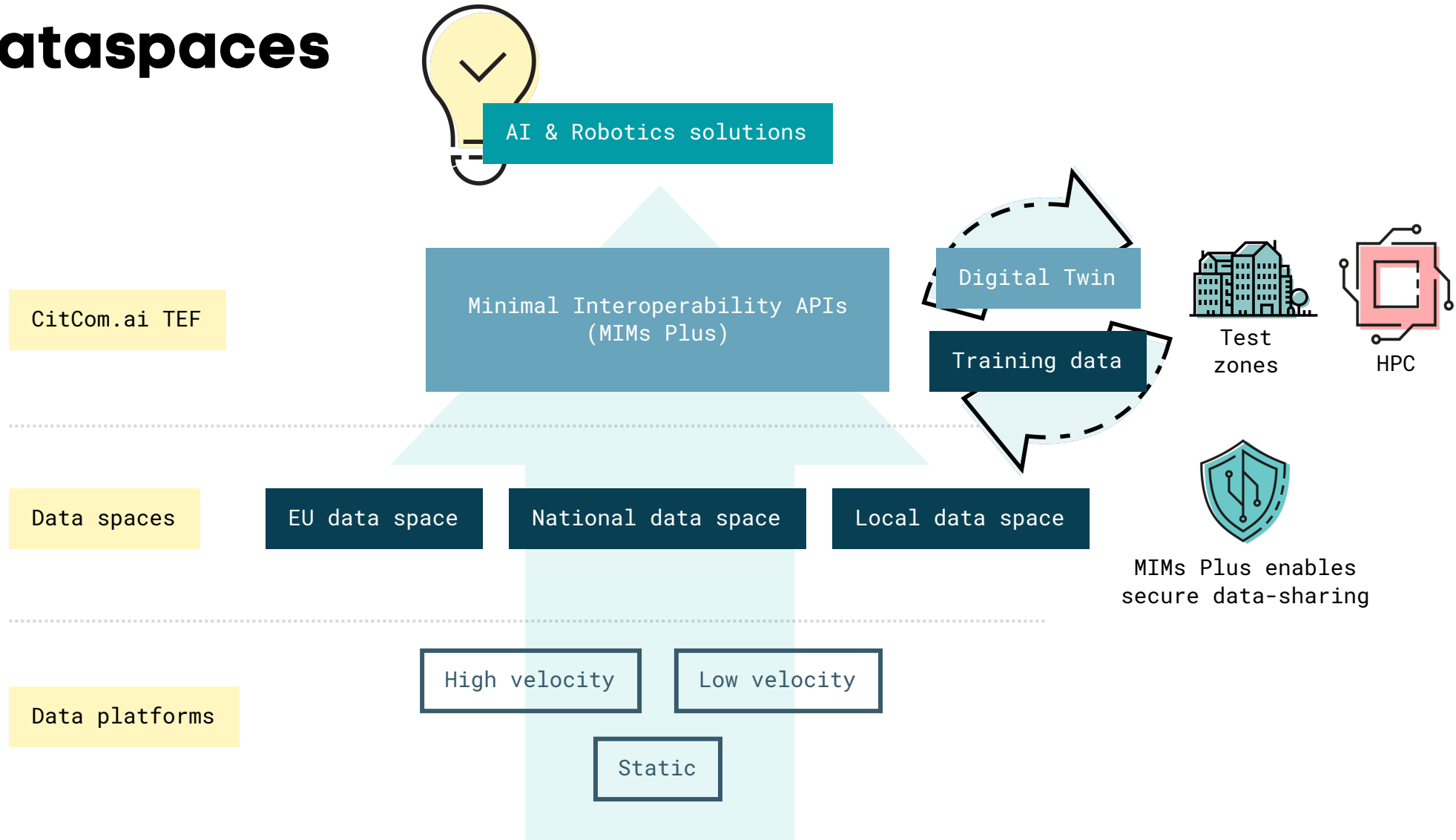
TEF DK

- Denmark (DTU) – Coordinator
- Sweden
- Finland

South Europe – Connect

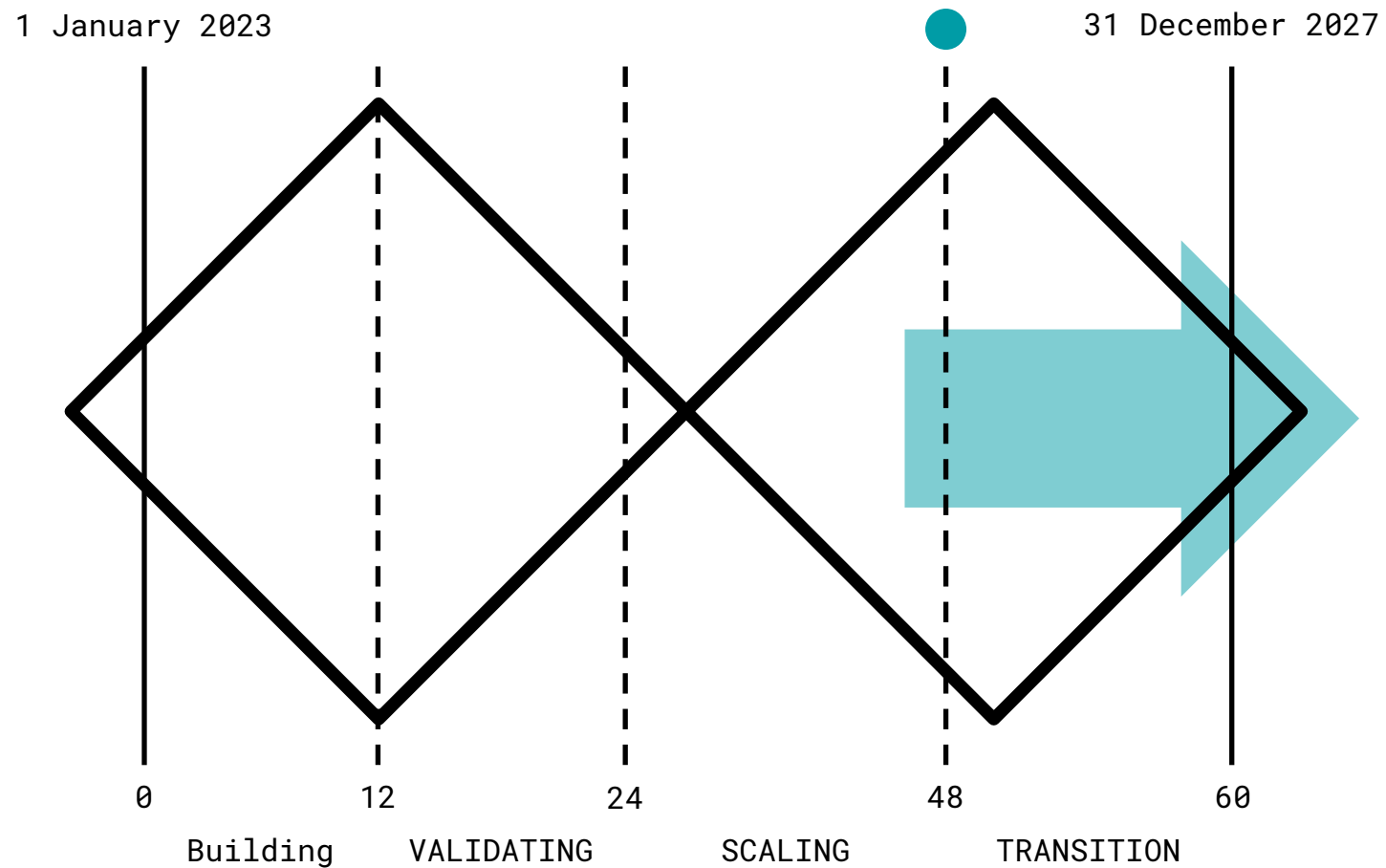
- Spain – Coordinator
- Italy
- Germany
- Poland

TEF Dataspaces



The process

● AI ACT
2026/2027



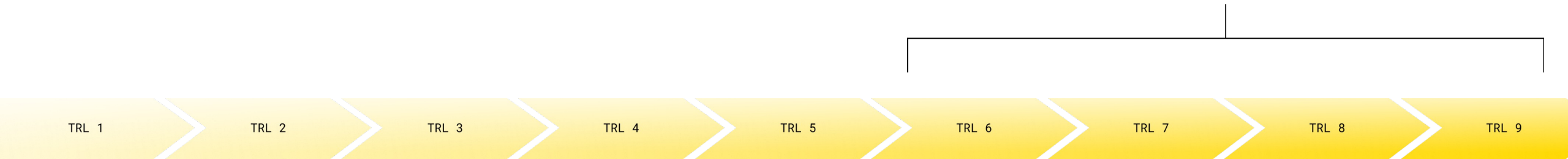
2 main offerings in a TEF

Experimental environment

Test environment

TEFs offers opportunities to experiment, optimize, analyze, test and certify data driven products and AI systems.

TRL 6-9



2 main offerings in a TEF

Experimental environment

Test environment

Complementary resources:

- Data spaces, HPC (High-Performance Computing), digital twins, Living Labs, etc.

Development opportunities:

- Optimizing, prototyping, innovation, test and experiments, analyses, experts.

Legislation:

- Analyzation, validation, certification.

TRL 5

TRL 6

TRL 7

TRL 8

2 main offerings in a TEF

Experimental environment

Test environment

ts.

Legislation:

- Analyzation, verification, validation, certification.

Function test and cyber security:

- Facilities, real environments, test platforms.

Interoperability:

- MIM 1-3, 6-7.

TRL 7

TRL 8

TRL 9

TEF offerings

TRL 5

TRL 6

TRL 7

TRL 8

TRL 9

	TRL 6 Teknologi-demo	TRL 6-8 System-/subsysteme development	TRL 8-9 Systemtest, launch and management	
Scale	- Prototyping	- Small scale implementation - Full scale development cases	- Small scale implementation - Full scale development cases	- Semi scale implementation
Test focus	- Teknology and product focus - Proof of concept	- Teknology and system focus - Proof of concept	- Focus on system and context - Proof of concept	- Contextual and operational focus - Proof of value
Test environment	- Closed test environment	- Semi open test environment - Real city environment	- Open test environment - Real city environment	- Involve suppliers of public facilities
Data, system and security focus	- Data management - Data analysis	- Data management and analysis - Central ledningssystem - Anslutning - Cybersäkerhet	- Data management, sharing and analysis - Interoperability and system integration - Cyber security	
Level of assessment and documentation	- Technology and product level - Use cases	- Solution specific system level - Use cases	- Middle layer system platform level - Use cases - Effects	- Organisational and operational level - Use cases - Business value
Integrity and regulation	- NDA	- GDPR-compatibility, AI Act, Data Act, Interoperability Act - Municipality, Region, Agency		

Two types of infrastructure in a TEF

for innovation, experimentation, optimization, analyzation, validation, verification, certification

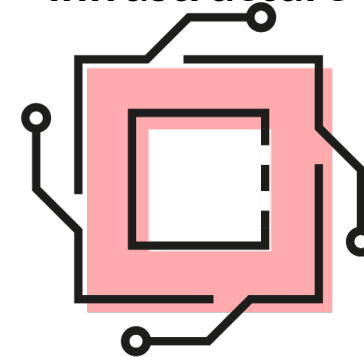
Physical technical infrastructure



AstaZero, Hus 14, Hornsgatan,
Hammarby Sjöstad, Cyber Range

Test and demo infrastructure for
AI systems in real environments,
eco systems and meetups

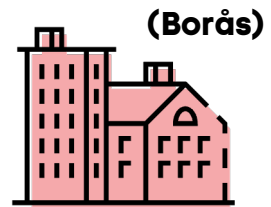
Digital technical infrastructure



RISE UDP, Testplattform
AI-system, Cyber Range

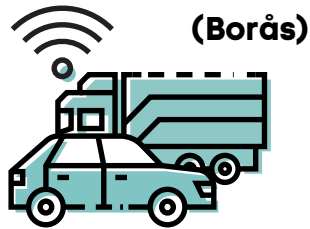
Digital platforms

6 test zoner in RISE Node



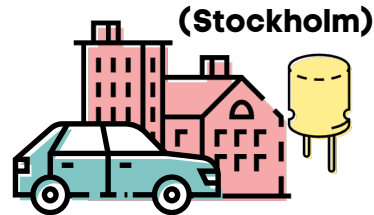
(Borås)

Hus 14



(Borås)

AstaZero



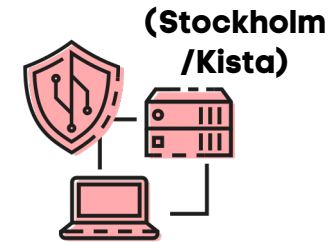
(Stockholm)

Hornsgatan



(Stockholm)

Hammarby sjöstad



(Stockholm /Kista)

Cyber Range



(Stockholm /Kista)

Private 5G
Electrum

What's in it for SME?

- Subsidized competence, experimental and testing services

	TRL 6 Teknologi-demo	TRL 6-8 System-/subsysteme development	TRL 8-9 Systemtest, launch and magement	
Scale	- Prototypande	- Small scale implementation - Full scale development cases	- Small scale implementation - Full scale development cases	- Semi scale implementation
Test focus	- Technology and product focus - Proof of concept	- Technology and system focus - Proof of concept	- Focus on system and context - Proof of concept	- Contextual and operational focus - Proof of value
Test environment	- Closed test environment	- Semi open test environment - Real city environment	- Open test environment - Real city environment	- Involve suppliers of public facilities
Data, system och säkerhetsfokus	- Data management - Data analysis	- Data management and analysis - Central ledningssystem - Anslutning - Cybersäkerhet	- Data management, sharing and analysis - Interoperability and system integration - Cyber security	
Nivå på bedömning och dokumentation	- Technology and product level - Use casesen	- Lösningsspecifik systemnivå - Use cases	- Mellanlayersystem och plattformsnivå - Use cases - Effects	- Organisational and operational level - Use cases - Business value
Integritet och regleringar	- NDA	- GDPR-compatibility, AI Act, Data Act, Interoperability Act - Municipality, Region, Agency		

- When verified by TEF - listed at AI-on-demand platform
- Meet potential customers and join the European AI eco system

How to engage!

- Registered SME and TRL 6-9 working in smart city domain
- Customer journey – meet Petra first petra.dalunde@ri.se
- Service catalogue in October
- citcom.ai



RI.
SE

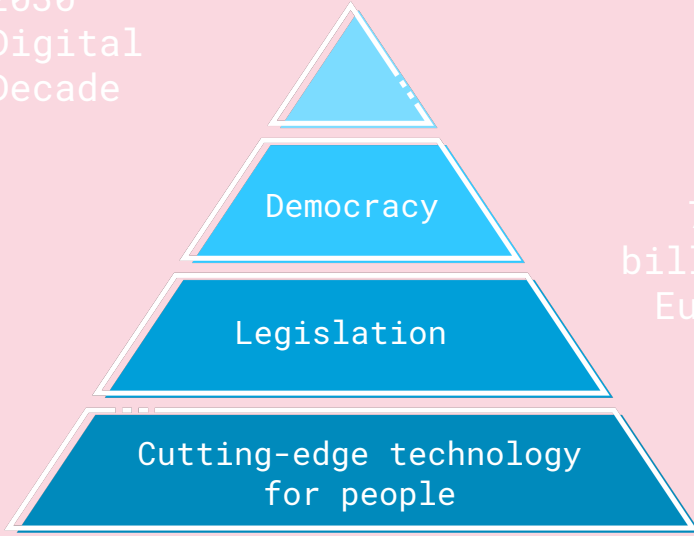
CitCom.ai

Welcome!

AI TEF for smart and sustainable cities and societies in Digital Europe program

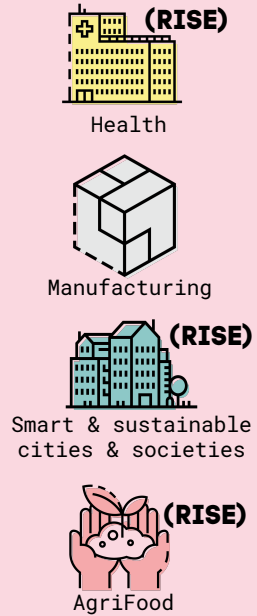


2030
Digital
Decade



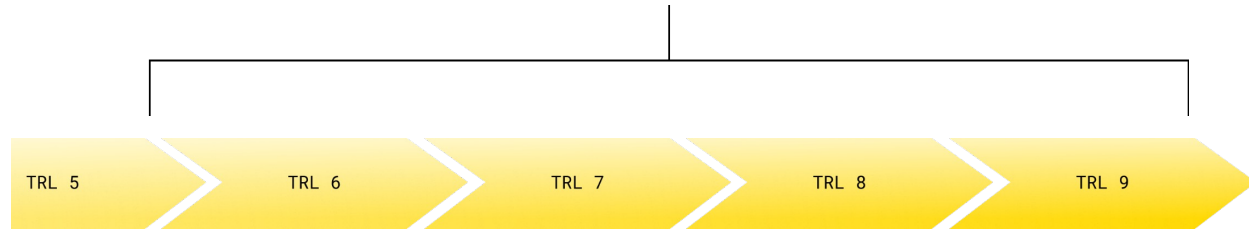
7
billion
Euro

4 launched TEF:s



TEFs offers opportunities to experiment,
optimize, analyze, test and certify data driven
products and AI systems.

TRL 6-9



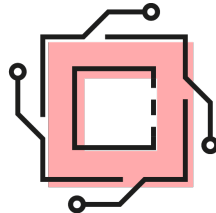
Physical technical infrastructure



Testzones: AstaZero, Hus 14,
Hornsgatan, Hammarby Sjöstad,
Cyber Range

Test and demo infrastructure
for AI systems in real
environments, eco systems
and meetups

Digital technical infrastructure



Platforms: RISE UDP, Cyber Range
Test platform AI-system

Digital platforms

CE marking

AI systems